

“The home is a safe place to live. Staff talk to us about being safe. I am safe and feel safe in the home”
Young Person



ALL OF OUR MULTI-BEDDED HOMES ARE RATED AS EITHER 'GOOD' OR 'OUTSTANDING' BY OFSTED.

Our multi-bedded homes provide residential placements for young people to benefit from a period of stability in a family living environment that allows them to re-engage with education and where applicable, work towards independence or a return to family.

MULTI-BEDDED HOMES

Our multi-bedded homes cater for mixed or single gender placements. We can provide an integrated package of Care to include Education and Therapy and seek to make positive progress in children's lives through joint working with key professionals and placing authorities.

Same day admissions may be made providing the placing authority are able to provide:

- ⇒ A comprehensive referral and chronology
- ⇒ All looked after child documentation (LAC documents)
- ⇒ Information to relevant Health and Education authorities

Or if the young person is already a service user of one of the provisions at Care Afloat.



SAILING FORWARD TO A BRIGHTER FUTURE WITH CARE AFLOAT



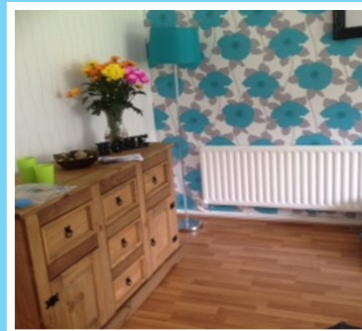
Care Afloat
 158-160 Birkrigg
 Skelmersdale
 Lancashire
 WN89HP
 Tel: 01695 733050
 Email: enquiries@careafloat.co.uk

BEVERLEY HOMES

Beverley Homes is registered as a 3 Bedded mixed gender home for young people who are able to live in a larger group setting. Many young people have successfully transitioned from our solo homes or mobile service to continue their path of development. By providing a consistent and stable environment young people are able to develop their skills and achieve their full potential.

LA BUNGALOW

La Bungalow specialises in working with up to 3 young people between the ages of 9-18 years old. The young people may have experienced emotional and/or physical trauma as the result of abuse or have a mental health diagnosis. La Bungalow staff have particular expertise assisting young people who have been involved in, or at risk of, sexual exploitation to break negative cycles of behaviour and achieve positive outcomes .



“Consultation and participation with young people is excellent”

“Staff have built very effective and robust relationships with young people. These are evident from the young people’s perspectives, their investment in the home and their considerable progress”.

“Staff support the young person to meet with other professionals who can help her to learn about the risks she may encounter in misuse of drugs and alcohol and in inappropriate relationships”.

“Young people accept and engage in therapeutic support. They acknowledge the benefit of this and learn strategies to manage their behaviour, and their emotional and psychological wellbeing”.

“Staff provide aspirational warmth and consistent care”.

**SOME OF THE THINGS
 OFSTED SAY ABOUT OUR
 MULTI-BEDDED HOMES**